



NANESH

ENGINEERS PVT. LTD.

Creating Trust.
Partnering Values.

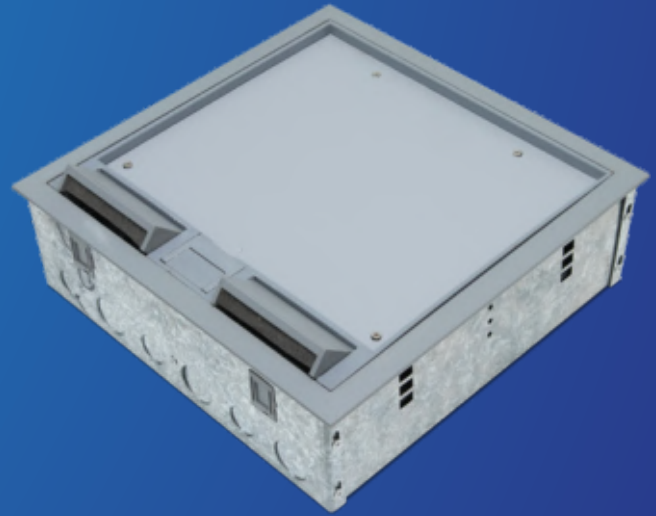
www.naneshengineers.com



Contents

Floor Box - - - - -	01
Raised Floor - - - - -	02
Raised Floor - - - - -	03
In Screed - ABS - - - - -	04
In Screed - SS - - - - -	05
Accessories- - - - -	06

Floor Box



IP 66

The only of its kind IP rated floor box in use to make sure your power needs are uninterrupted under all working condition be it indoor or outdoor. We customise our floor boxes to meet all architectural and aesthetic requirements.



RAISED / IN SCREED

Floor distribution system and designed to suit projects needs covering carpet/ marble/ granite/ wooden flooring etc. With high load bearing capacity we are ideal choice for commercial, office and industrial projects.



IP 66 Available

Raised Floor



Raised Floor Modular

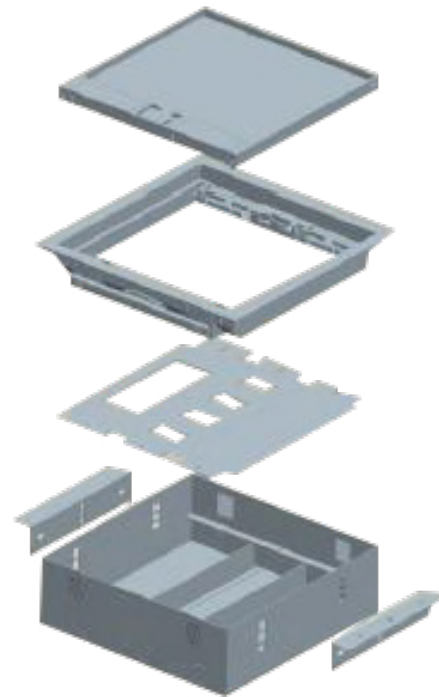
Description

Modern offices are now equipped with Raised floor panels to house all utilities including power, data, and air-conditioning facilities inside the floor cavity. The requirements for a safe and flexible cable distribution systems is important to contribute to the sustainable office design for future proof alternation.

Component of a raised floor systems

- Modular raised floor box c/w flexible conduits.
- Raised floor trunking.
- Cable Grommets.
- Header Box
- Junction Box
- Vertical Drop Down Box

Raised Floor



PM Raised Floor Service Outlet Box - Exploded View



Description

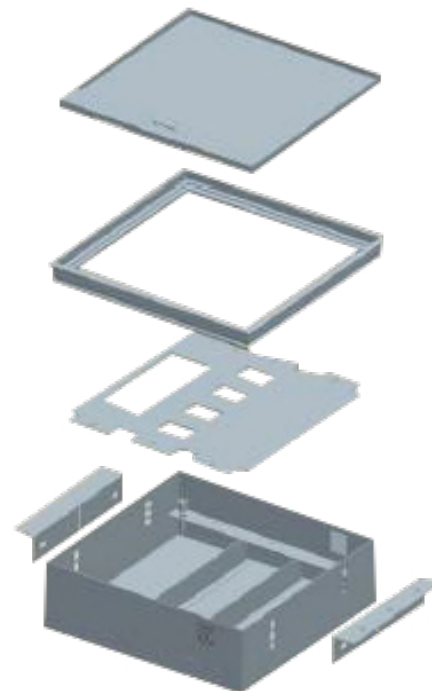
Service outlet boxes are available in Plastic (PM) version.

Base boxes are pre-punched with 20mm/25mm knock out for connecting flexible conduit.

A pair of outer flange used to support the box are fixed to either on the side of cut hole or on top of the raised floor. The boxes are mounted on the flanges use a clamp supplied.

Boxes are 250mm square for PM range.

General speaking, when raised floor cavity is used for air conditioning plenum, metal box installation is more preferable.



	Dimension	PM Range
2-compartment	250 x 250	BXFBRAB2502CT08
3-compartment	250 x 250	BXFBRAB2503CT08

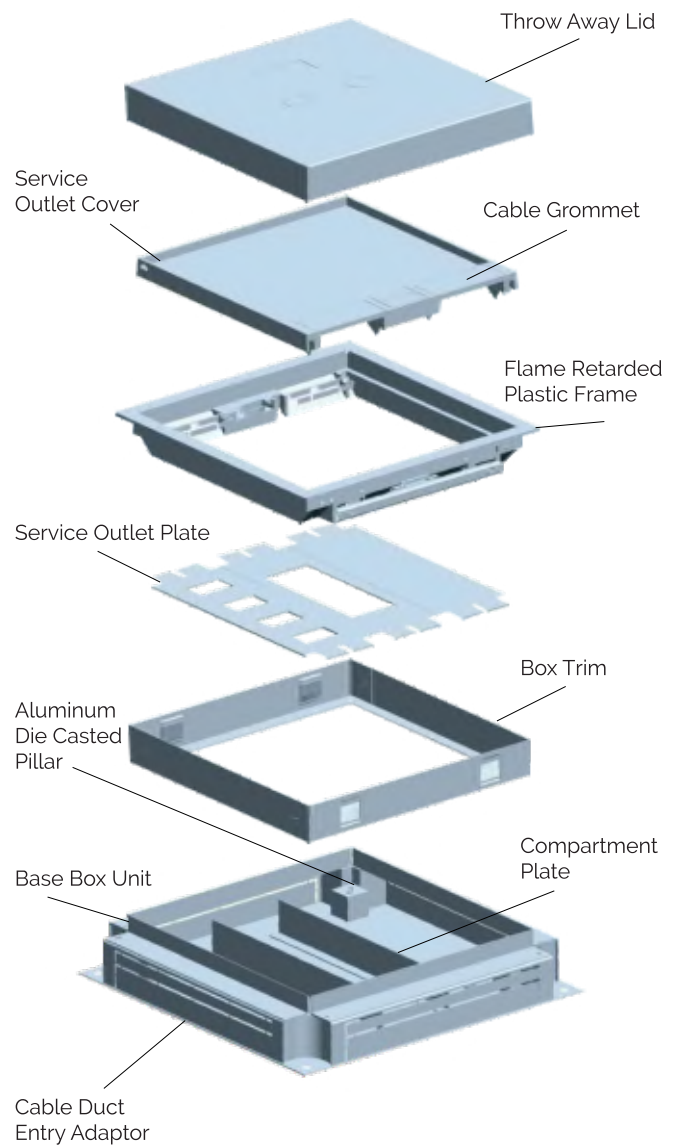


Description

The PM Range service outlet box is suitable for most built environment. The box is supported by 4 pieces die cast aluminium pillar, the frame and trap is made of flame retardant ABS which is ROHS compliant. The square shape design enable cable direction are interchangeable in 4 directions. For ease of installation, a protective throw away lid is supplied together with the box for use during mortar laying. Outlet cover and frame are installed after carpeting, this protects the box from dirt and unnecessary damage during installation.

Features

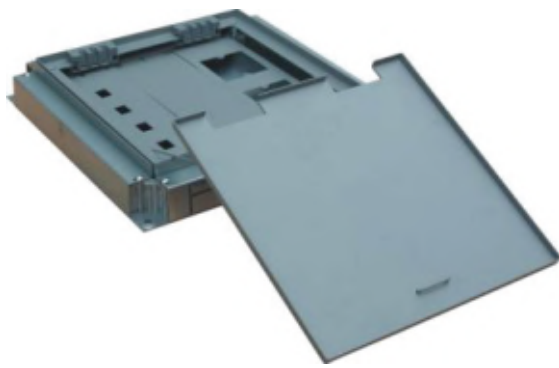
- Low cost • Easy installation
- Interchangeable with junction box
- Self closing lid to meet latest IEC 61534-2
- Choice of 2,3 compartment (please consult sales team if more compartments are required).
- Design to meet pr EN50085-2-2 to accept 5000N load.
- Light Grey colour, natural match carpet and surroundings.
- Suitable for shadow screeding, minimum 60mm.
- Designed, Manufactured and tested as per IEC 60670-1



Service Outlet Box-Exploded View

Part No	Dimension (mm)	PM Service Box
BXFBIAB2502CTXX*	250 x 250	2-compartment, Service outlet box
BXFBIAB2503CTXX*	250 x 250	3-compartment, Service outlet box

XX stands for variable recess depth selection, depth available in ABS range: 8 & 12 MM

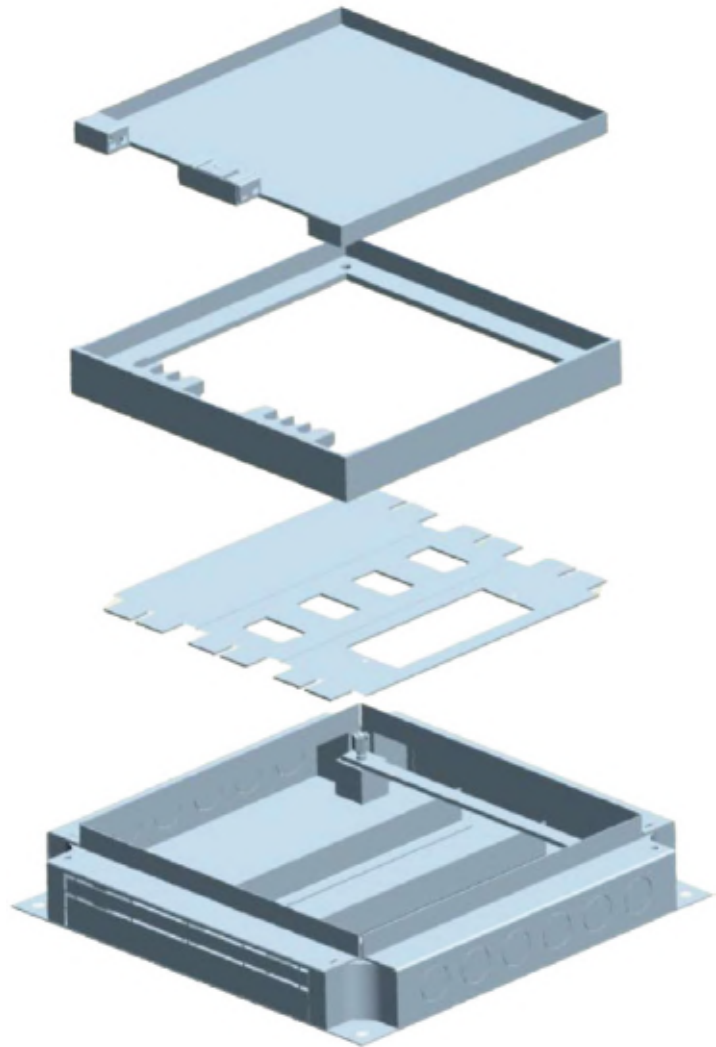


Description

This type of Floor box is suitable for marble and granite flooring application. The box is fabricated by stainless steel sheet. Recess can be from 12mm to 40mm (deeper recess can be accommodated), screeding should be more than 65 mm (Consults our sales team for details).

Features

- Low cost metal assembly
- Choice of 12-40mm recess depth.
- Easy installation.
- Choice of different sizes, from 150mm to 350mm.
- Design to meet pr EN50085-2-2 to accept 5000N load.
- Self closing lid to meet latest IEC 61534-2.
- Choice of 1,2,3,4 compartment (please consult sales team if more compartments are required)
- Wide range of wiring devices available.
- Designed, Manufactured and tested as per IEC 60670-1

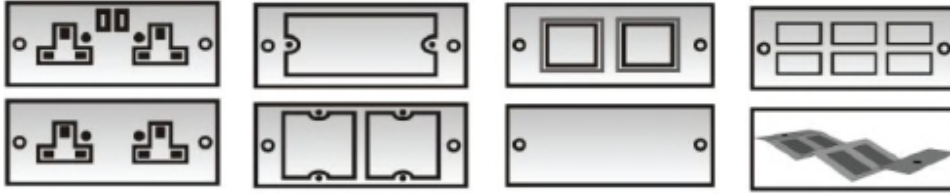


Service Outlet Box-Exploded View

Part No.	Dimension (mm)	GS Service Outlet Box
BXFBISS150X1CTXX*	150 x 150	1-compartment
BXFBISS150X2CTXX*	150 x 150	2-compartment
BXFBISS250X2CTXX*	250 x 250	2-compartment
BXFBISS250X3CTXX*	250 x 250	3-compartment
BXFBISS3254CTXX*	325 x 250	4-compartment

XX stands for variable recess depth selection, depth available in ABS range: 12, 15, 20, 30 & 40 MM

Accessories



Description	Box sizes (mm)	
	250 x 250	300 x 300
2x 13A British Switch socket with mounting plat	2S13CP/25S	2S13CP/30S
13 A British single switched Socket with mounting plate	1U13CP/25S	1U13CP/30S
Accessory only without mounting plate		
2x 13A British Switch socket module	2S13NP	2S13NP
13 A British single switch Socket module	1U13NP	1U13NP
RJ 45 Socket Cat 5+	1RJ450	1RJ450
RJ 11 telephone socket	1RJ110	1RJ110
British Telecom Socket	1BT000	1BT000
Mounting Plate Only		
Twin standard Socket plate without accessory	2PT00/25S	2PT00/30S
2 single standard socket plate without accessory	2PD00/25S	2PD00/30S
6 x RJ45 without accessory	6R450/25S	6R450/30S
Zizac 4 x RJ 45 type 1 without accessory	4R45Z/25S	4R45Z/30S
Zizac 4 x RJ 45 type 2 without accessory	4R45Y/25S	4R45Y/30S
2 Euro frame without accessory	2E000/25S	2E000/30S
Blank plate	1B000/25S	1B000/30S

Other sizes of mounting plates and punched aperture are available upon requested

Floor Box Part Number Details

CPFBIAB2503CT08 CP	FB	I	AB	250	3CT	08	
PART#	BRAND	PRODUCT	FLOOR BOX TYPE	TRAP FINISH	SIZE	NUMBERS OF COMPARTMENT	TRAP DEPTH
	NANESH	FLOORBOX	INSCREED (I) RAISED (R)	ABS (AB) STIANLESS STEEL (SS)	150 X 150 (150) 250 X 250 (250) 325 X 250 (325)	TWO (2CT) THREE (3CT) FOUR (4CT)	8MM (08) 10MM (10) 12MM (12) 15MM (15) 20MM (20) 40MM (40)



Nanesh Engineers Private Limited



Corporate Office :

Samadhan Bldg, 202 - B wing,
S.V. Road, Near Ram Mandir Signal,
Goregaon West, Mumbai - 400104



+91 91521 01002



electricals@naneshengineers.com



Plant :

Plot No. DG 03, Dungara, GIDC,
Vapi, Valsad, Gujarat - 396191. India.



www.naneshengineers.com